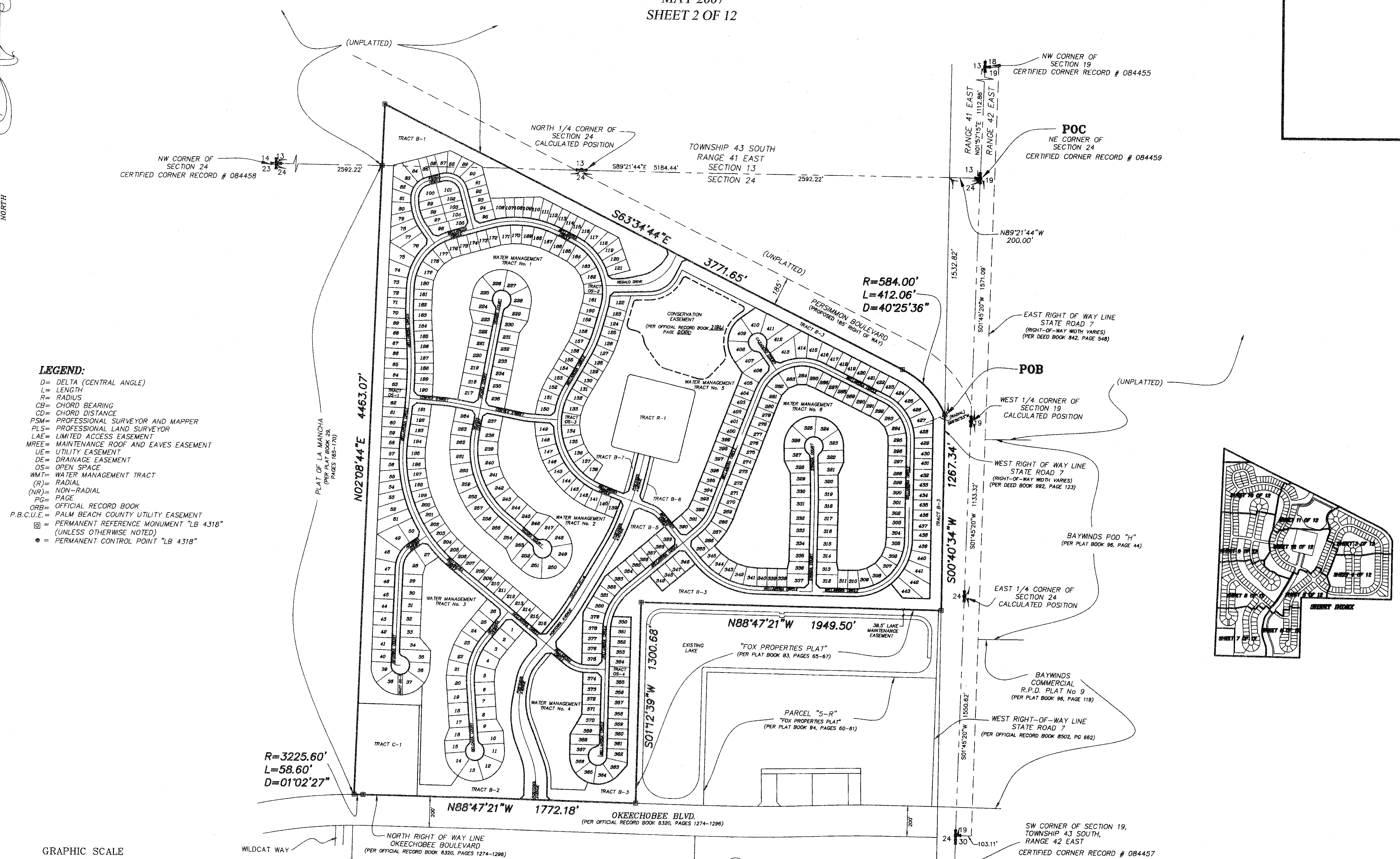
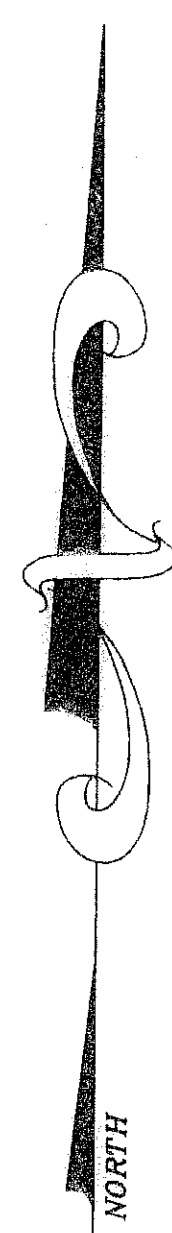
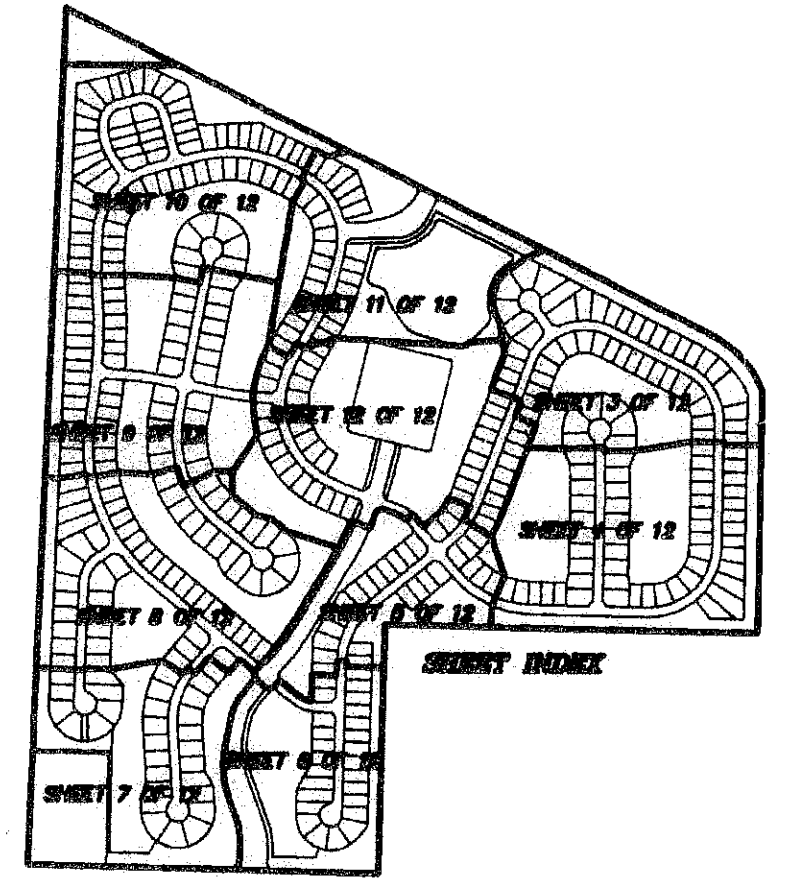
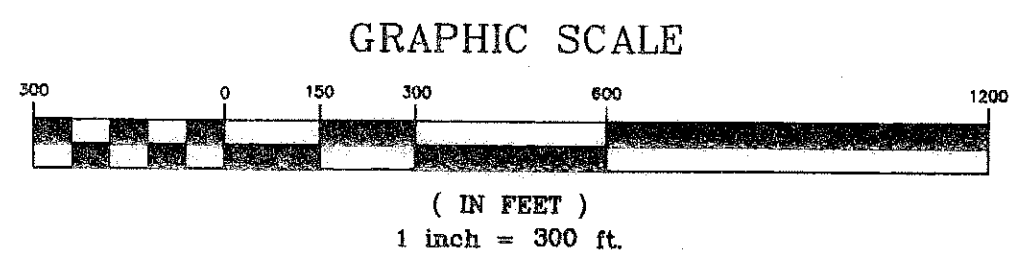


PORTOSOL
 IN SECTIONS 13 AND 24, TOWNSHIP 43 SOUTH, RANGE 41 EAST,
 VILLAGE OF ROYAL PALM BEACH, PALM BEACH COUNTY, FLORIDA
 MAY 2007
 SHEET 2 OF 12



- LEGEND:**
- D= DELTA (CENTRAL ANGLE)
 - L= LENGTH
 - R= RADIUS
 - CB= CHORD BEARING
 - CD= CHORD DISTANCE
 - PSM= PROFESSIONAL SURVEYOR AND MAPPER
 - PLS= PROFESSIONAL LAND SURVEYOR
 - LAE= LIMITED ACCESS EASEMENT
 - MREE= MAINTENANCE ROOF AND EAVES EASEMENT
 - UE= UTILITY EASEMENT
 - DE= DRAINAGE EASEMENT
 - OS= OPEN SPACE
 - WMT= WATER MANAGEMENT TRACT
 - (R)= RADIAL
 - (NR)= NON-RADIAL
 - PG= PAGE
 - ORB= OFFICIAL RECORD BOOK
 - P.B.C.U.E.= PALM BEACH COUNTY UTILITY EASEMENT
 - ☐= PERMANENT REFERENCE MONUMENT "LB 4318" (UNLESS OTHERWISE NOTED)
 - = PERMANENT CONTROL POINT "LB 4318"



PORTOSOL		
NMI NICK MILLER, INC. 2580 RCA BLVD, STE 105, PALM BEACH GARDENS, FL 33410 TEL: 561.627.5200 FAX: 561.627.0983 www.nickmillerinc.com D.B.P.R. BUSINESS LICENSE No. 4318	SHEET NO.	SCALE: 1" = 300'
	2 OF 12	DATE: MAY 2007
		JOB NO. 1038.004
		FILE: 1038.004.DWG